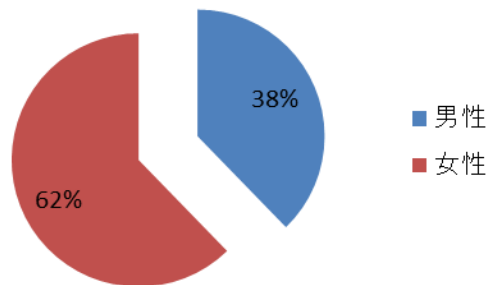
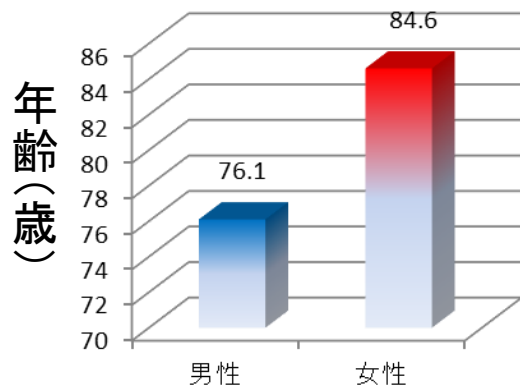


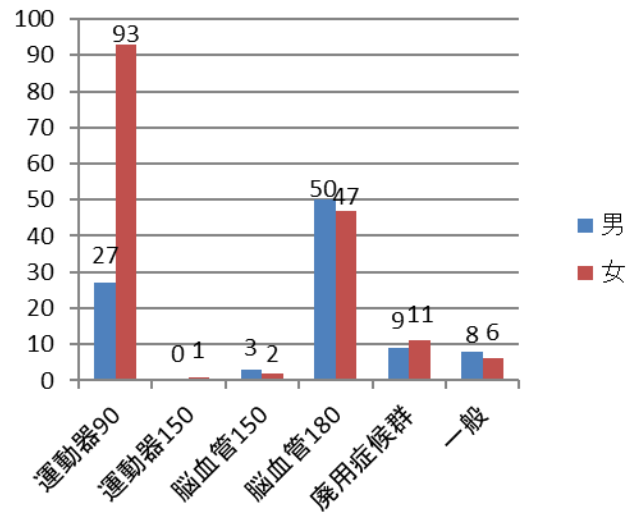
2021年度 入院患者 (平均年齢 81.4 歳,n=257)



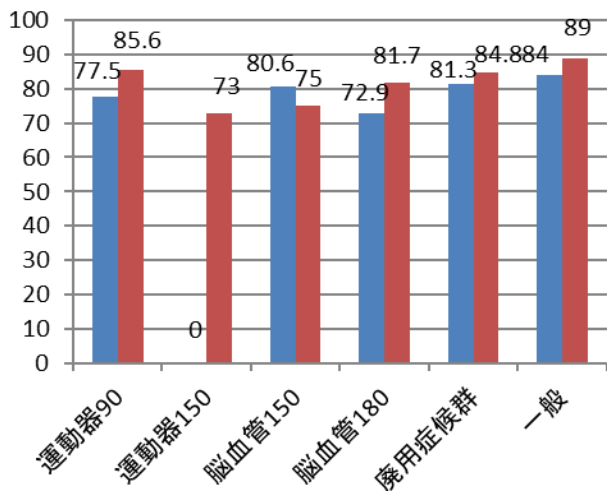
男女平均年齢



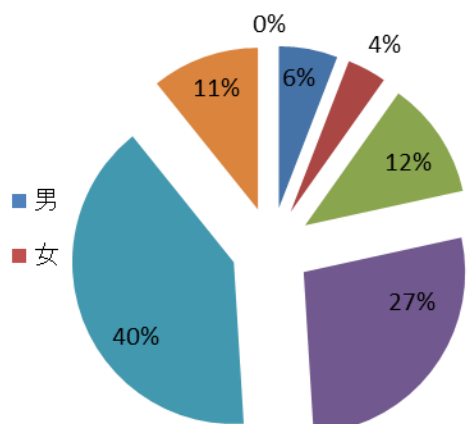
疾患別の男女数



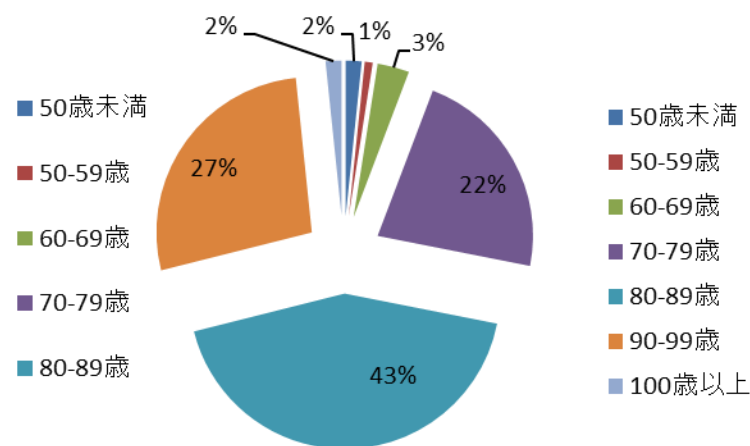
疾患男女別平均年齢



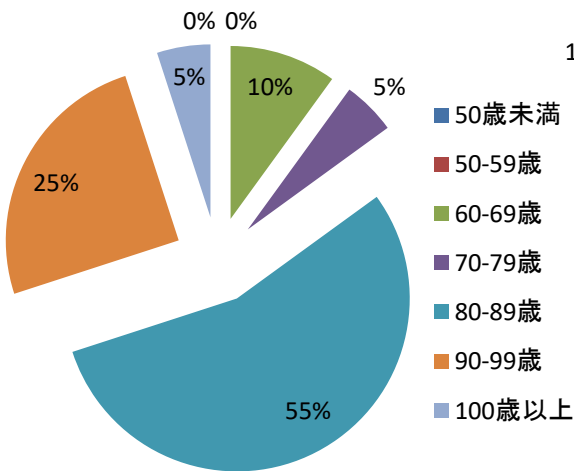
脳血管疾患 年齢分布 n102



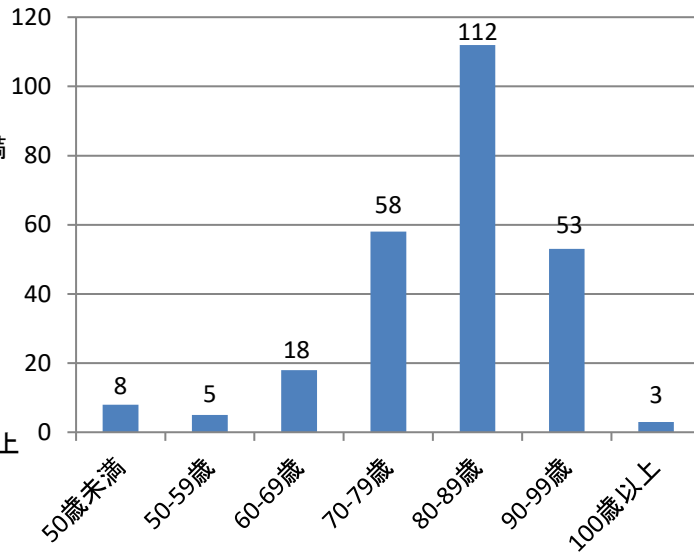
運動器疾患 年齢分布 n121



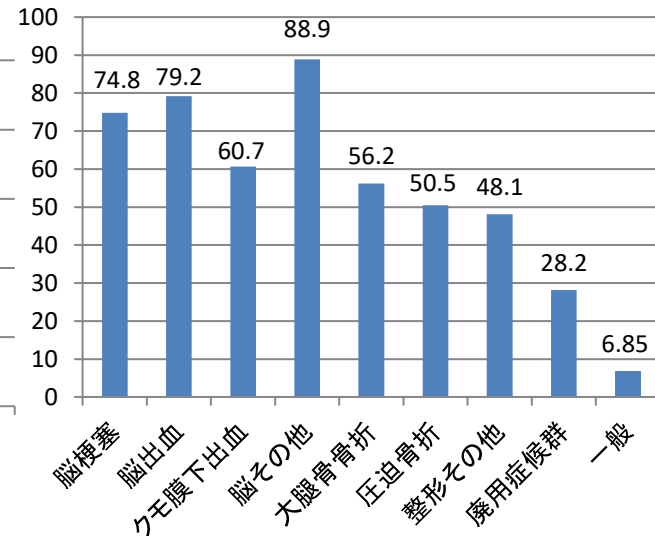
廃用症候群
年齢分布 n20



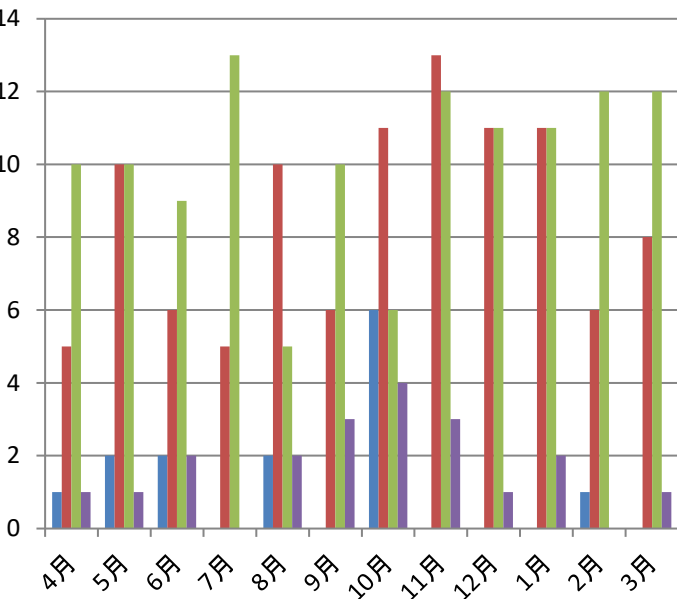
入院患者の年齢分布 n257



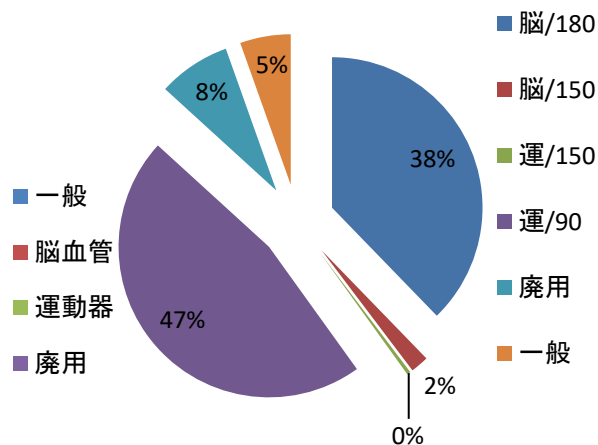
疾患別在院日数



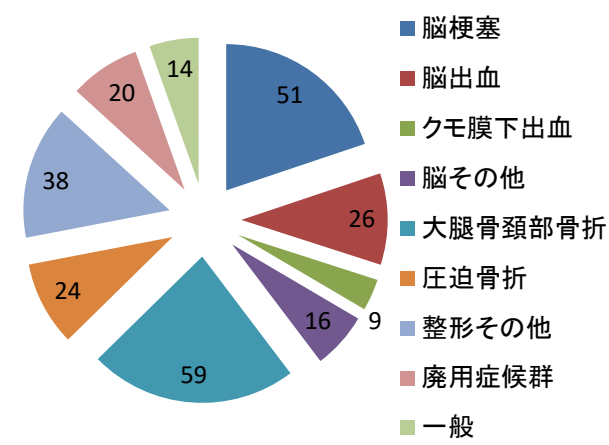
月別入院患者数



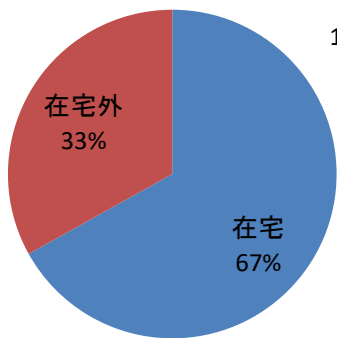
入院患者割合



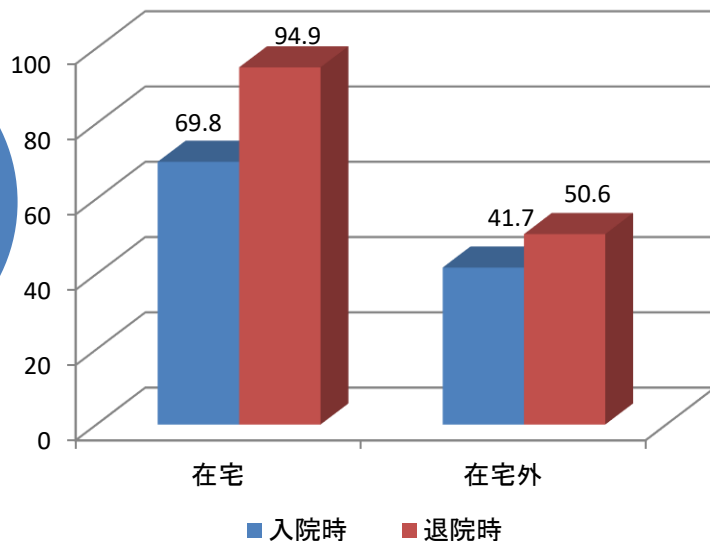
入院患者の基礎疾患



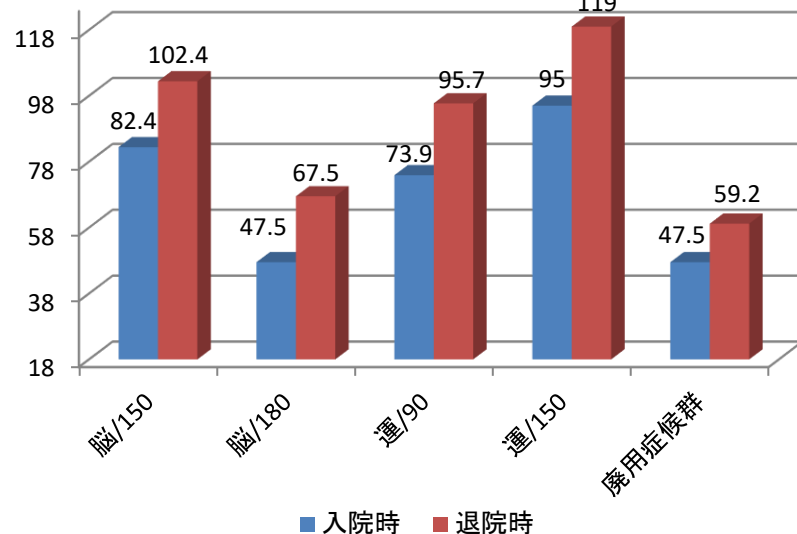
退院先n257



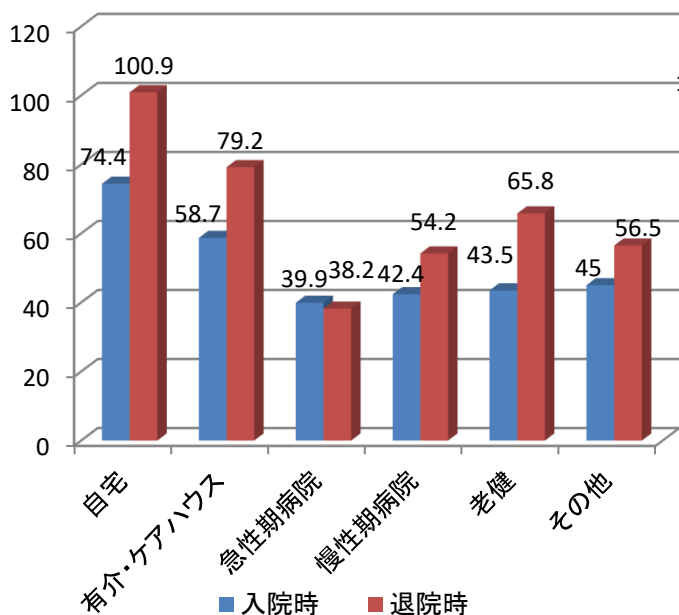
退院先別FIMの変化 n243(回復期対象患者)



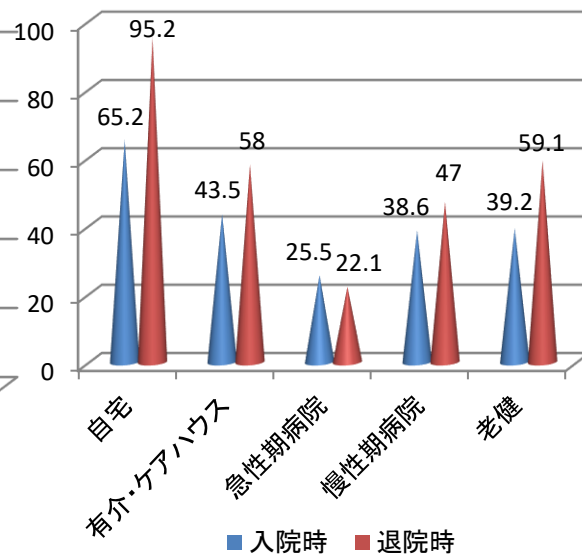
入院時・退院時のFIMの変化 n243(回復期対象患者)



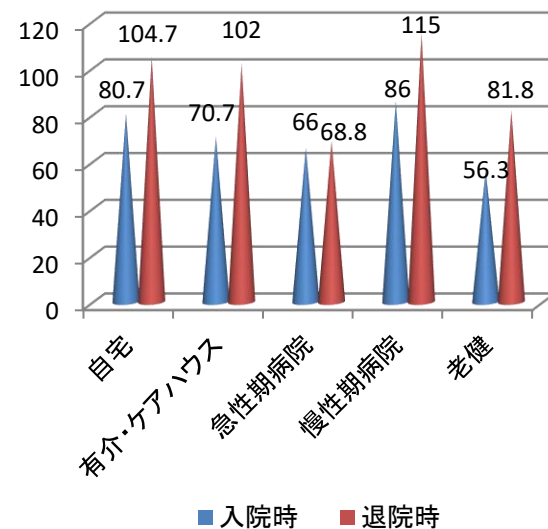
退院先別FIMの変化n243



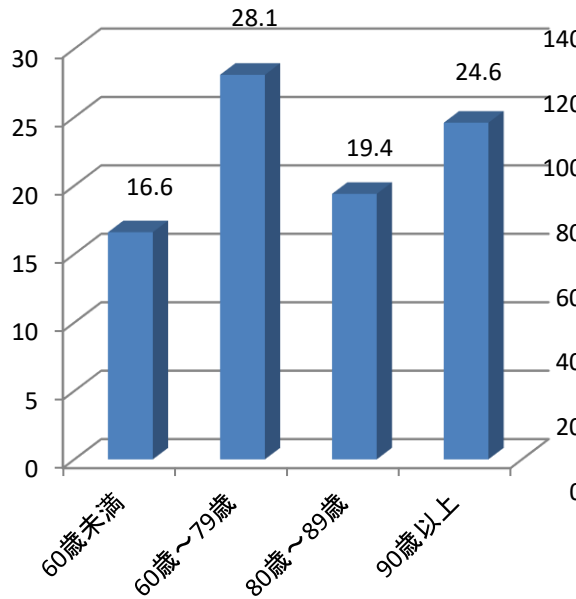
脳疾患における退院先別FIMの変化n90



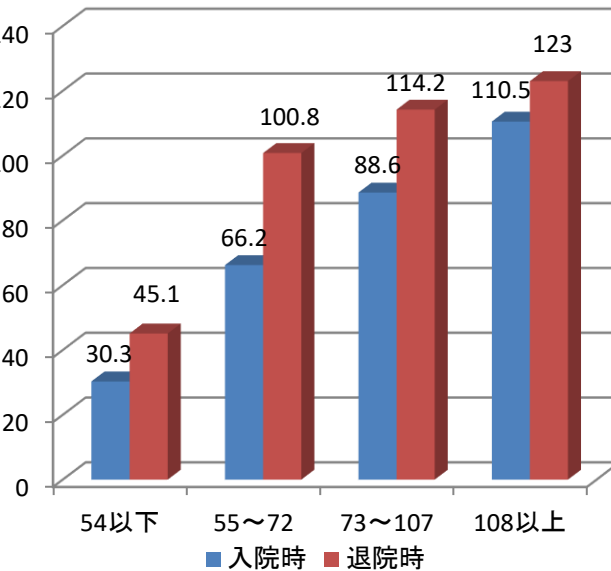
運動器における退院先別FIMの変化n104



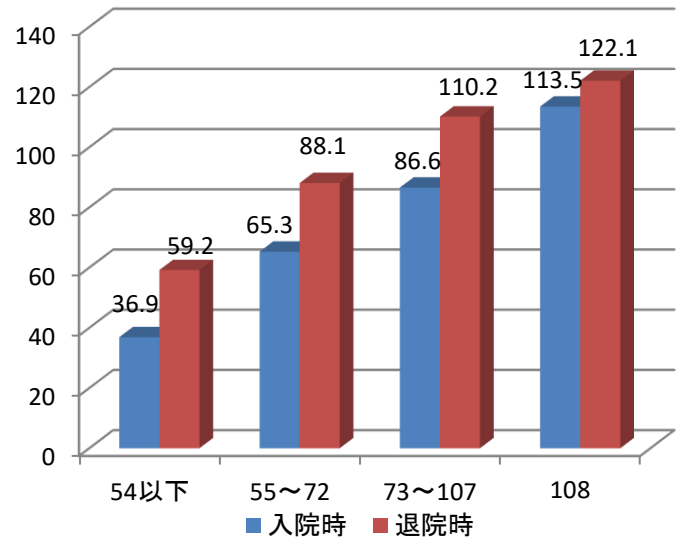
年齢とFIMの改善効果
(運動・認知合計) 243



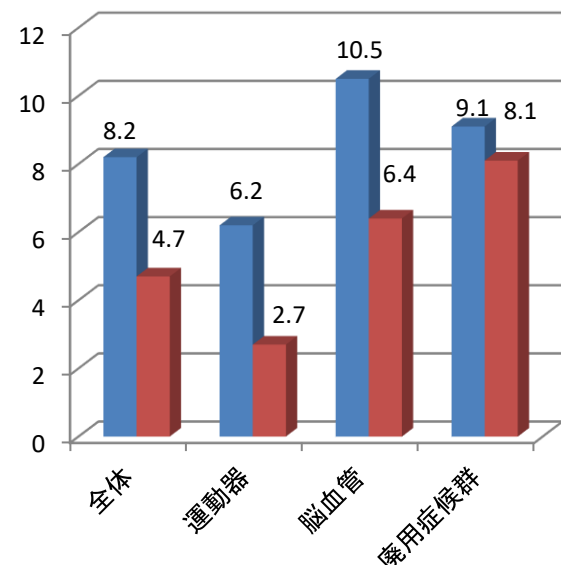
入院時FIM別の改善効果
: 脳血管



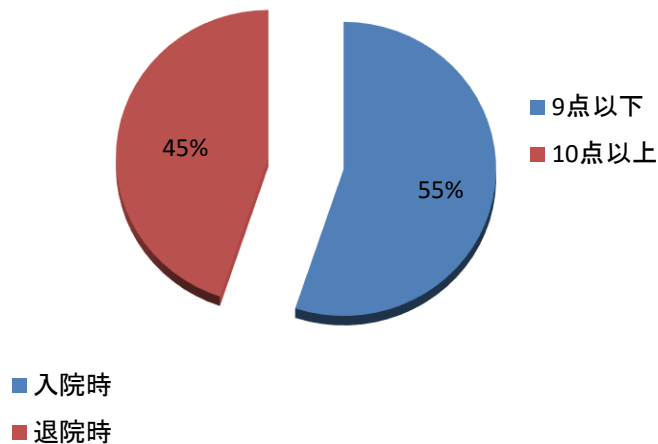
入院時FIM別の改善効果
: 運動器



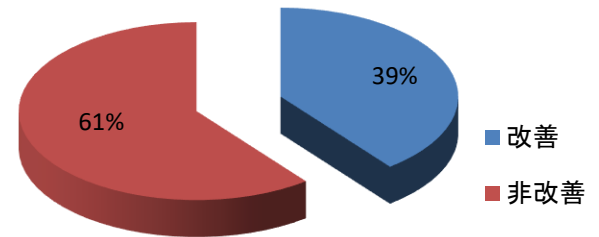
疾患別日常生活動作



日常生活機能評価重症者割合
10点以上(重症者)



重症改善率4点 n109



日常生活の変化 入院時/退院時

人数

