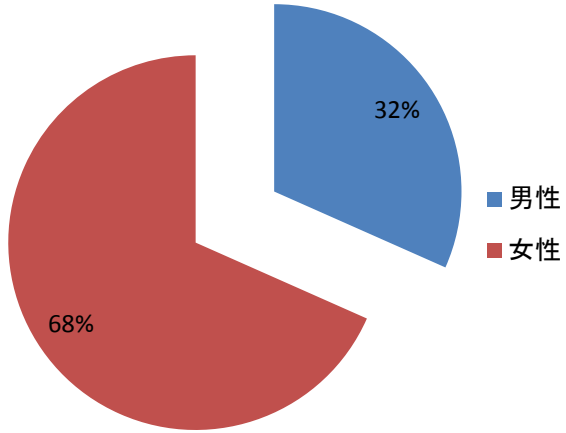
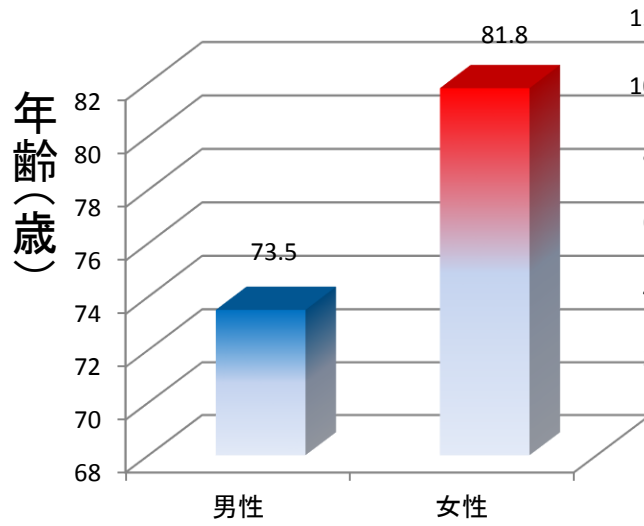


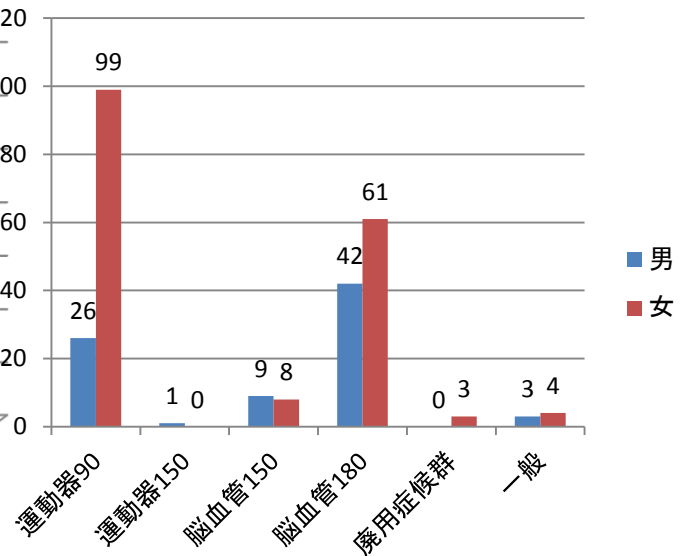
平成30年度入院患者性別 (平均年齢 79.2 歳, n=256)



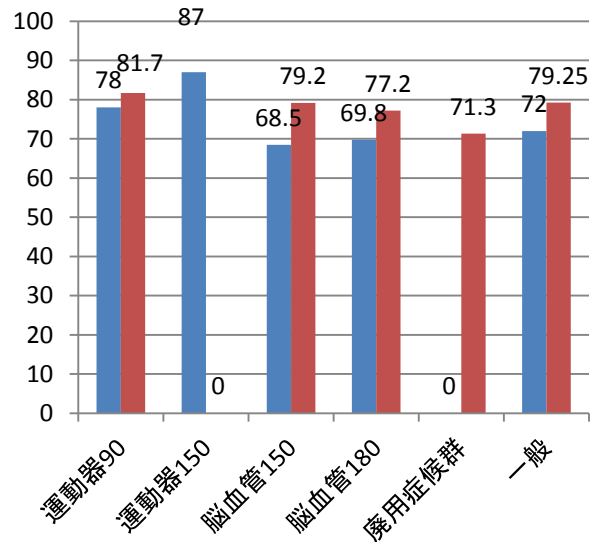
男女平均年齢



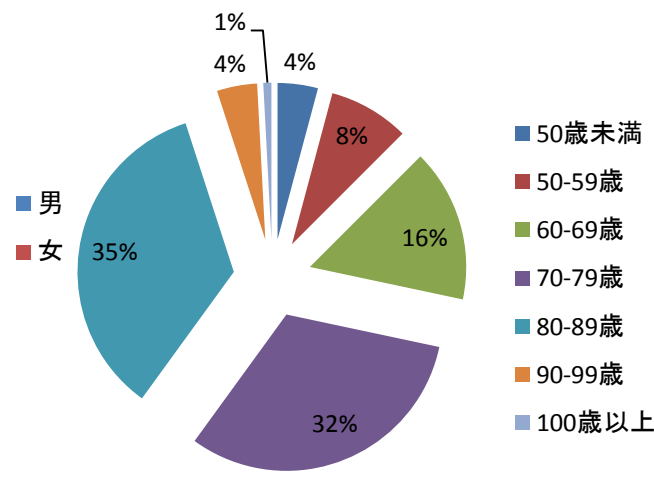
疾患別の男女数



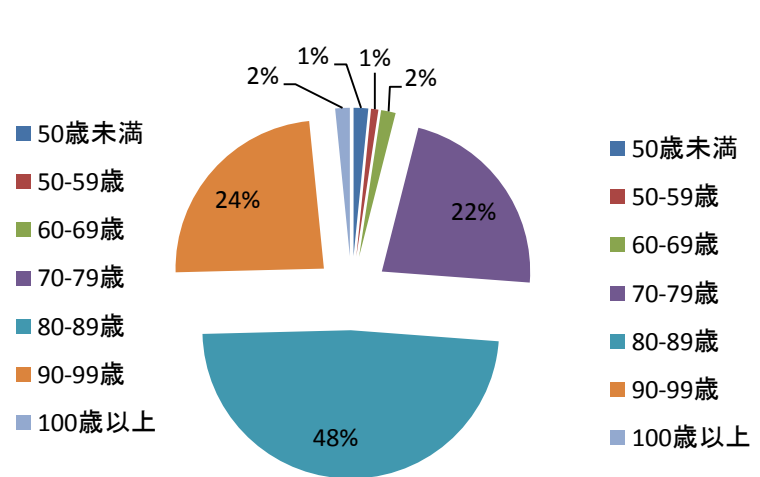
疾患男女別平均年齢



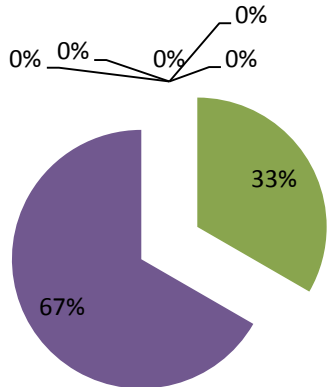
脳血管疾患 年齢分布 n120



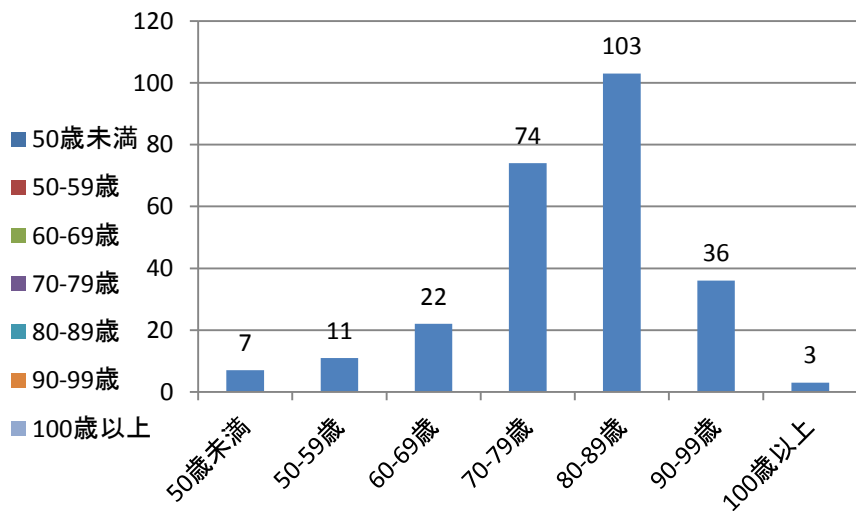
運動器疾患 年齢分布 n126



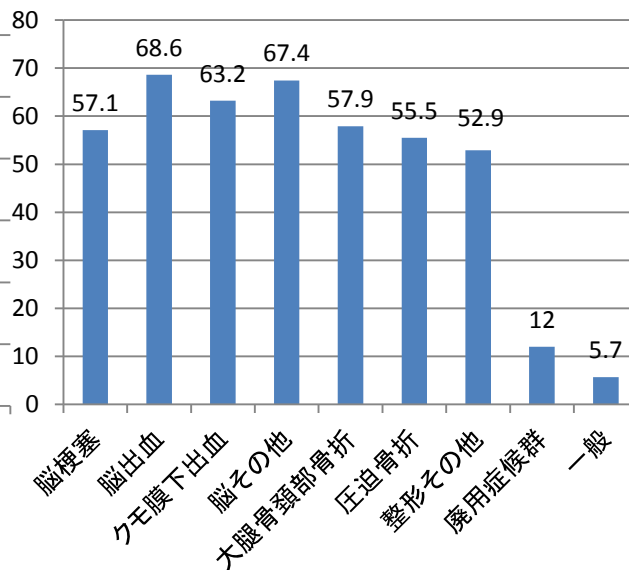
廃用症候群
年齢分布 n3



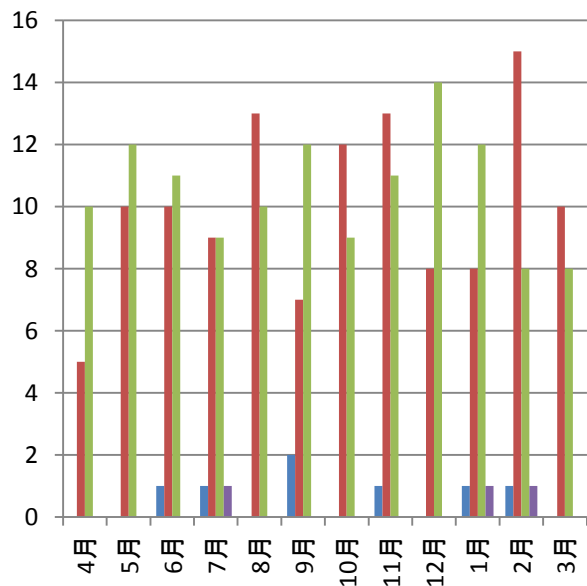
入院患者の年齢分布 n256



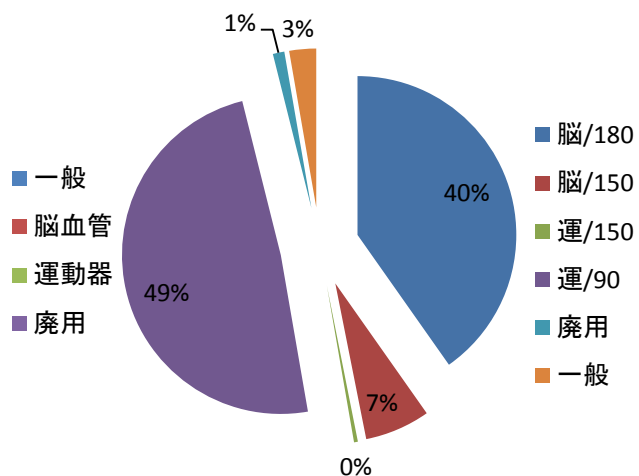
疾患別在院日数



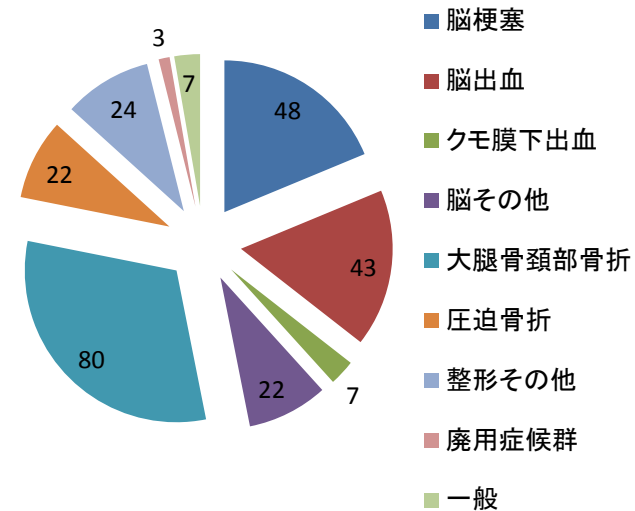
月別入院患者数



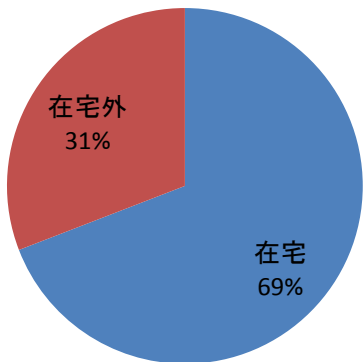
入院患者割合



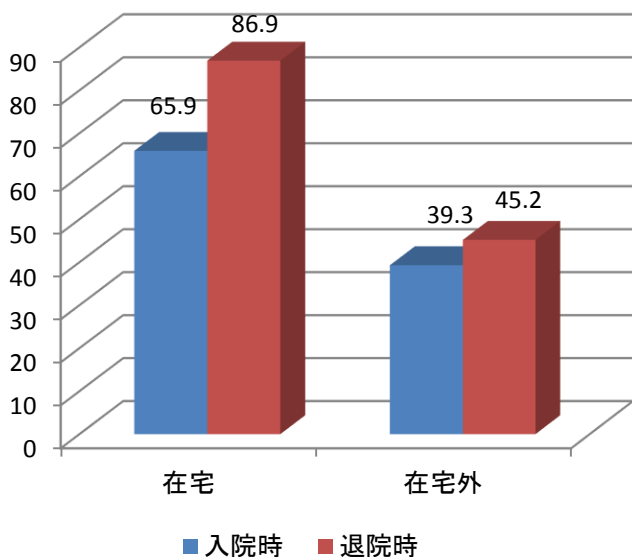
入院患者の基礎疾患



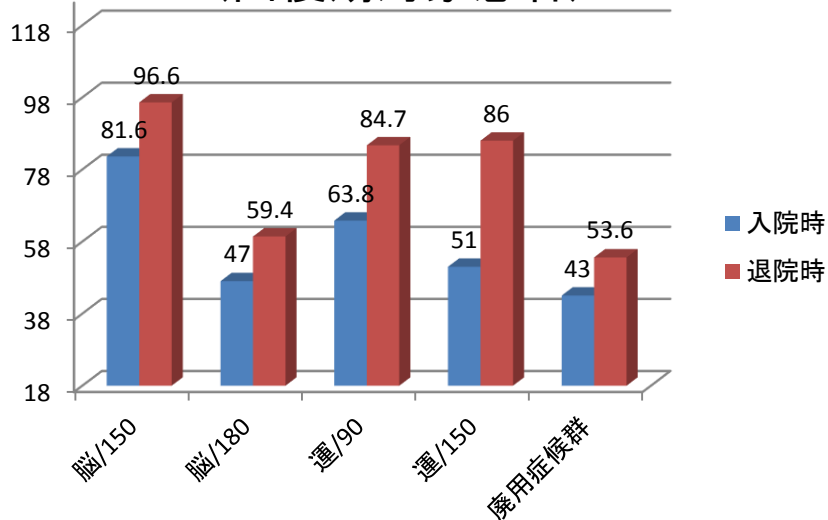
退院先n256



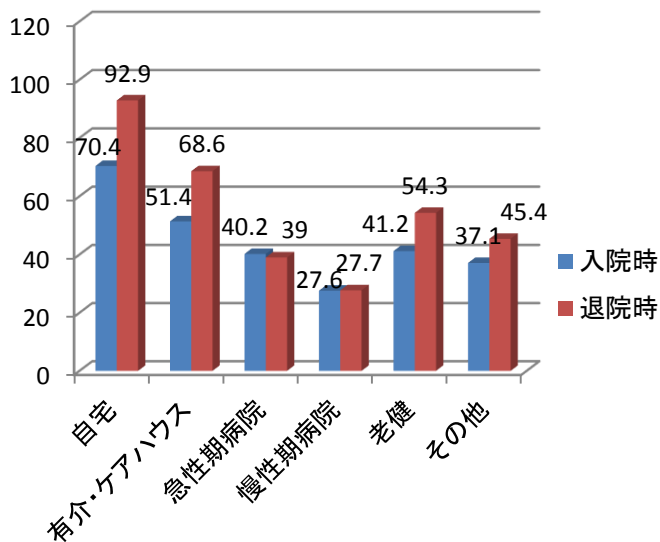
退院先別FIMの変化 n249(回復期対象患者)



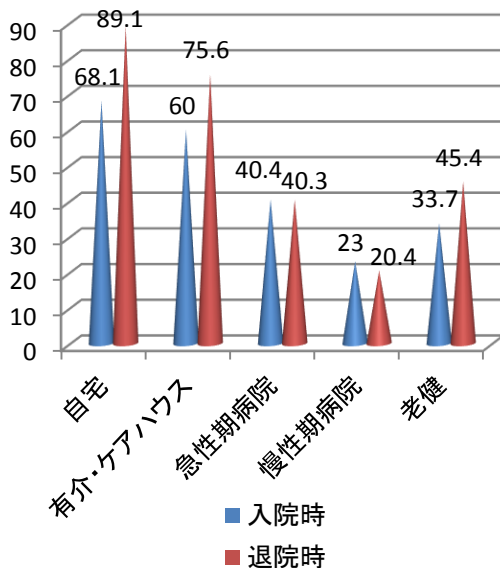
入院時・退院時のFIMの変化 n249(回復期対象患者)



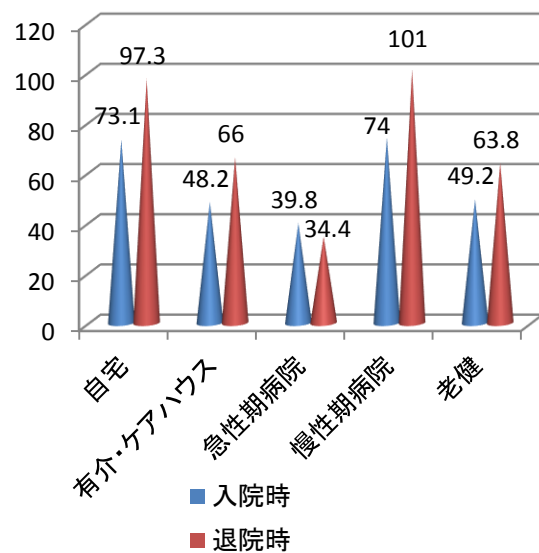
退院先別FIMの変化 n249



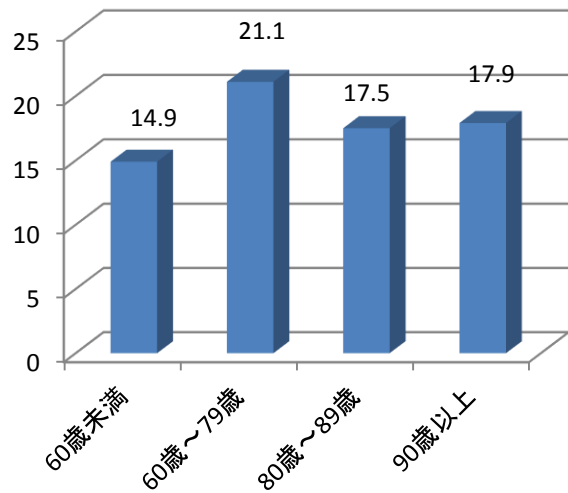
脳疾患における退院先別FIMの変化n120



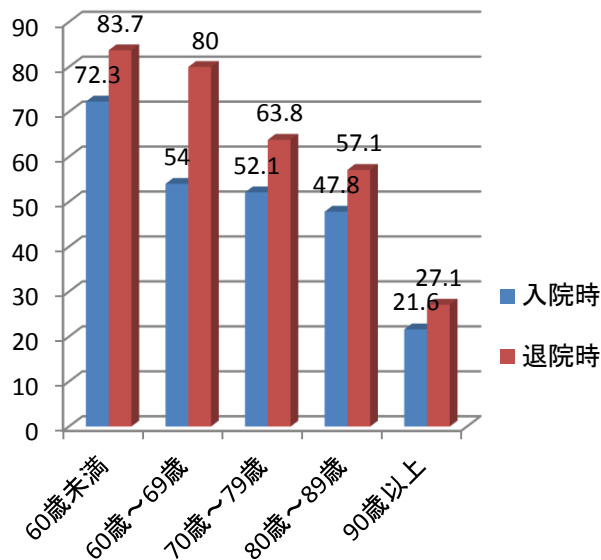
運動器における退院先別FIMの変化n126



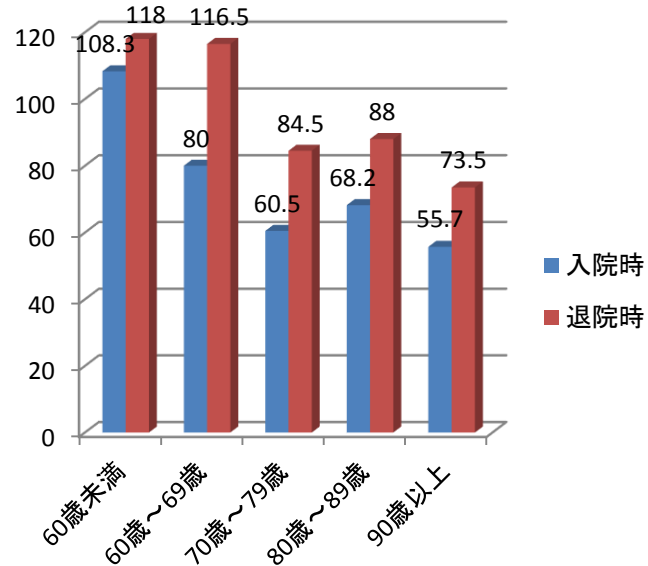
年齢とFIMの改善効果
(運動・認知合計) n249



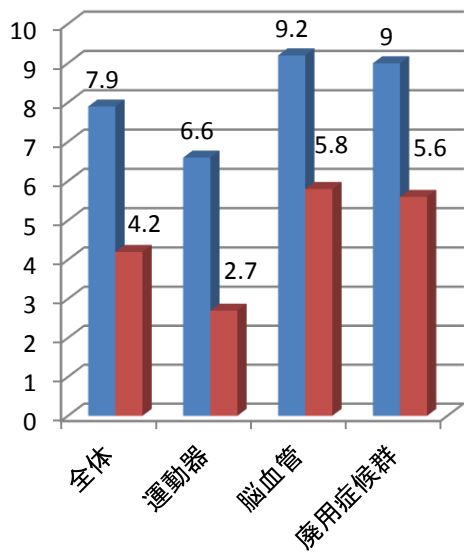
入院時FIM別の改善効果
:脳血管



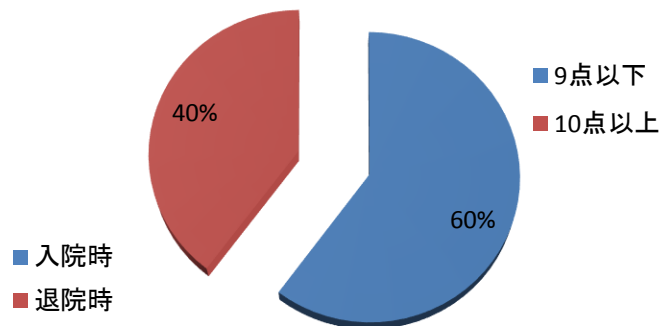
入院時FIM別の改善効果
:運動器



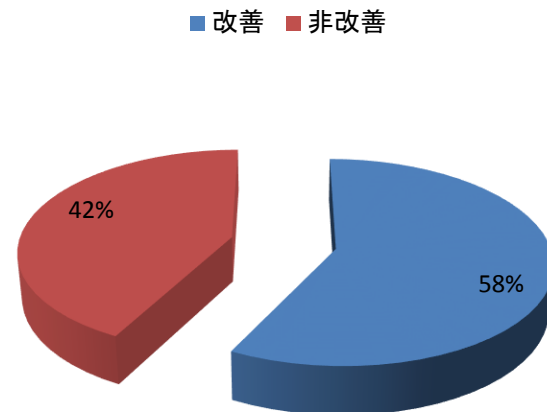
疾患別日常生活動作



日常生活機能評価重傷者割合
10点以上(重傷者)



重症改善率4点 n99



日常生活の変化 入院時/退院時

人数

