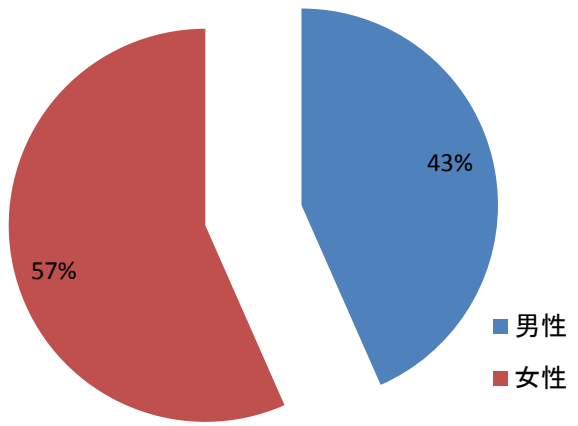
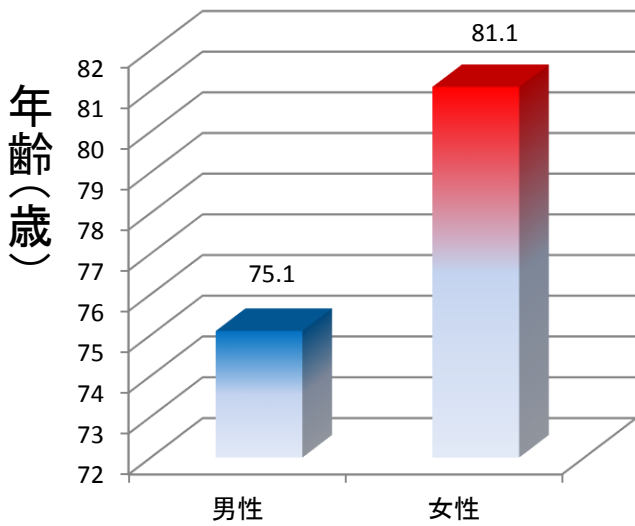


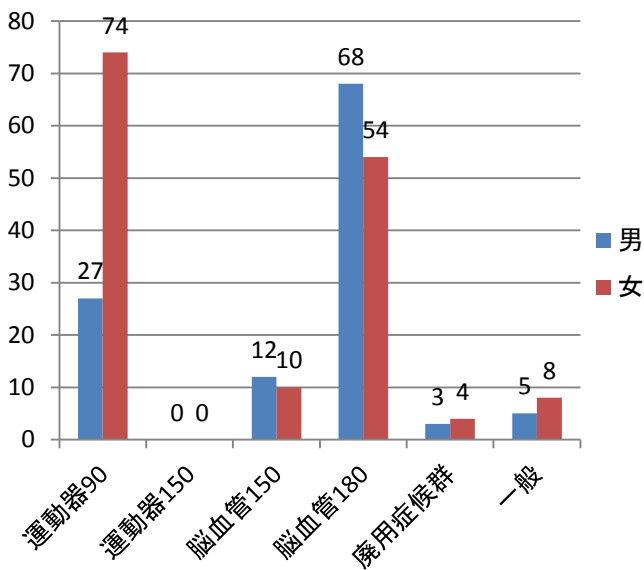
# 平成29年度入院患者性別 (平均年齢 78.5 歳, n=265)



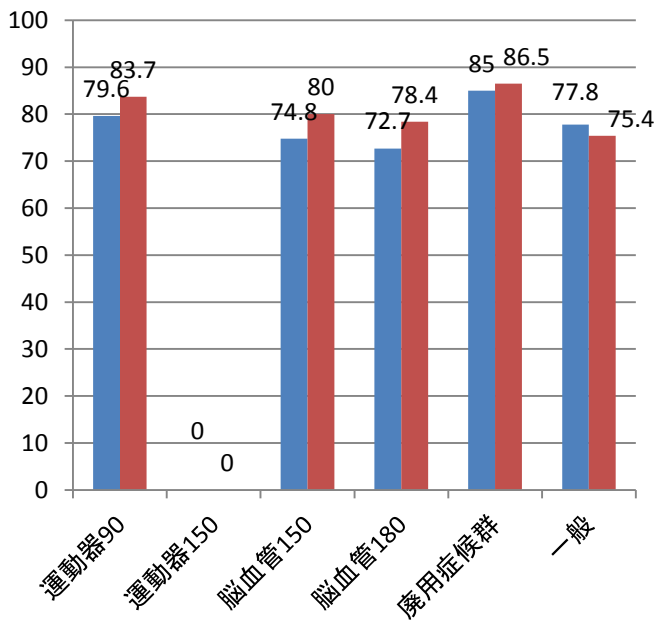
## 男女平均年齢



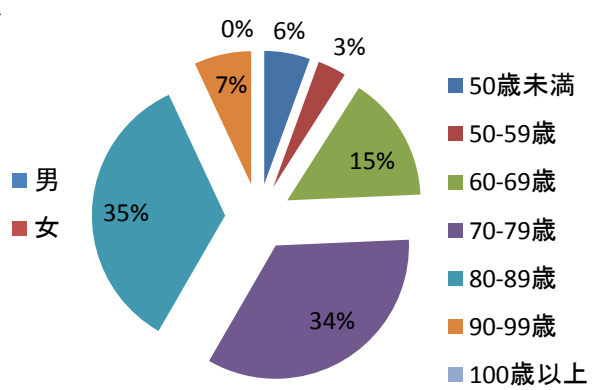
## 疾患別の男女数



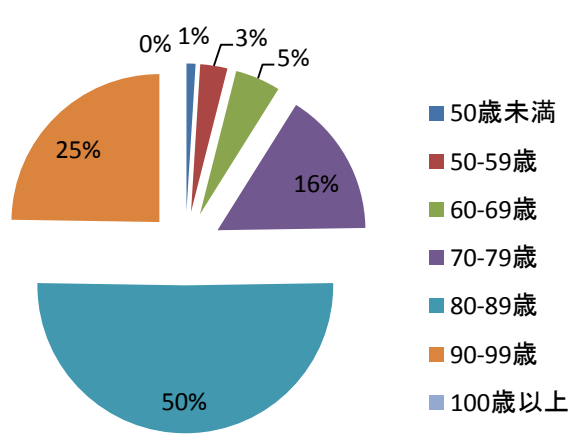
## 疾患男女別平均年齢



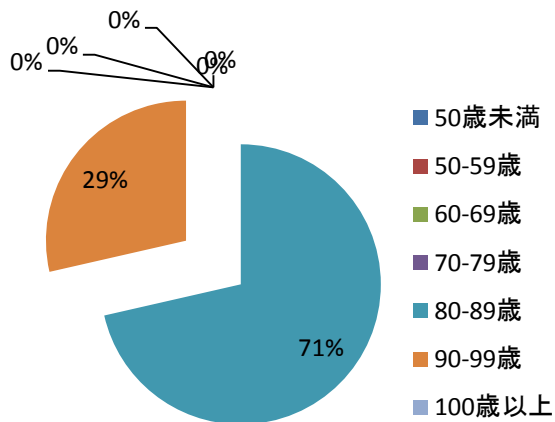
## 脳血管疾患 年齢分布 n144



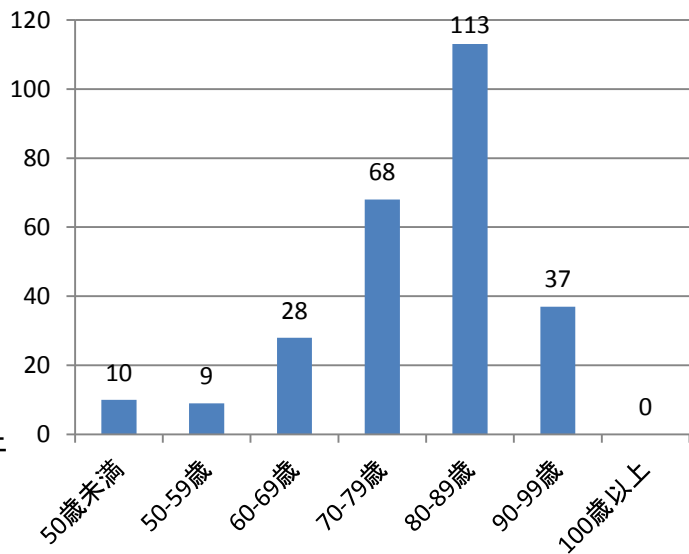
## 運動器疾患 年齢分布 n101



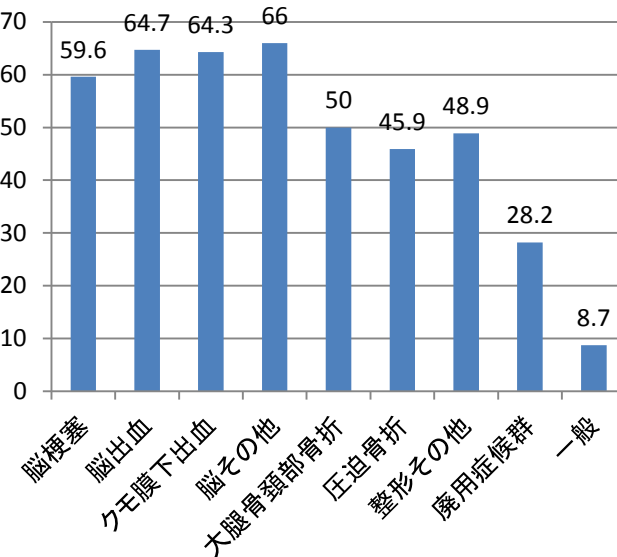
### 廃用症候群 年齢分布 n7



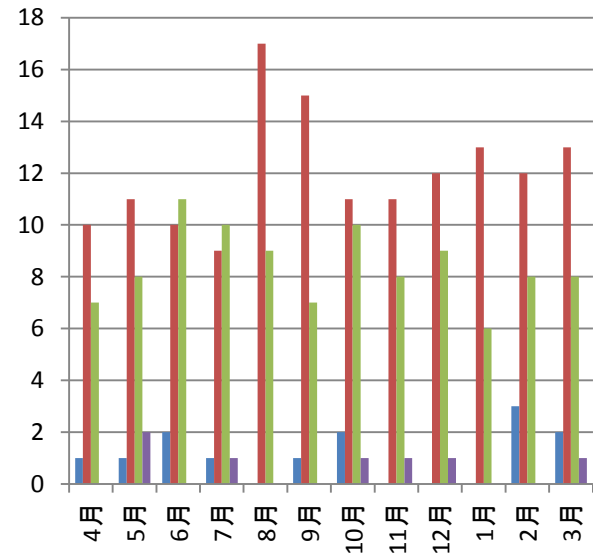
### 入院患者の年齢分布 n265



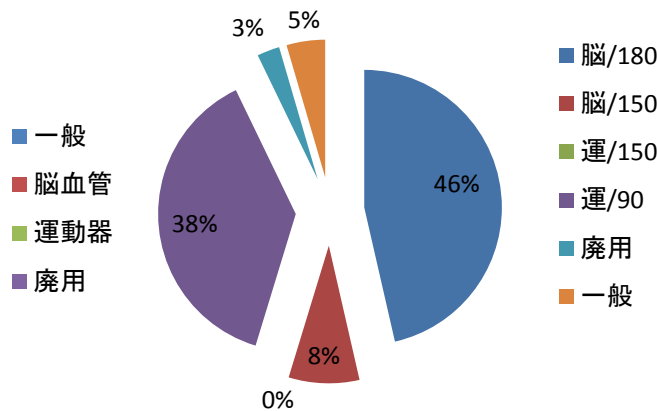
### 疾患別在院日数



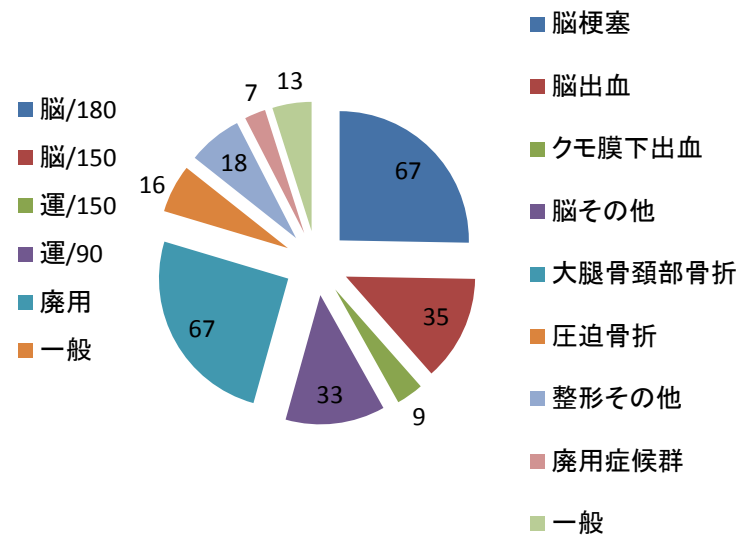
### 月別入院患者数



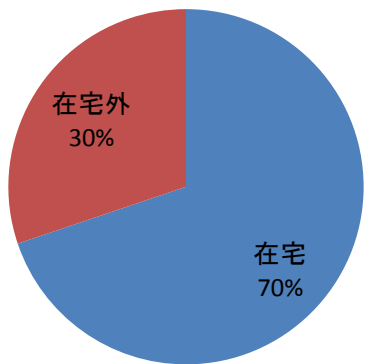
### 入院患者割合



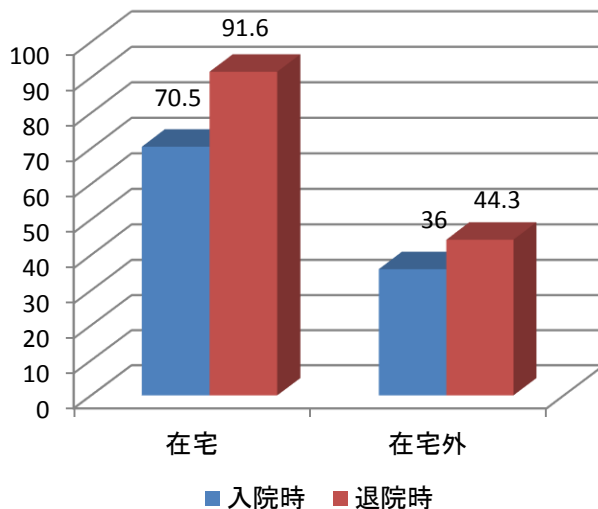
### 入院患者の基礎疾患



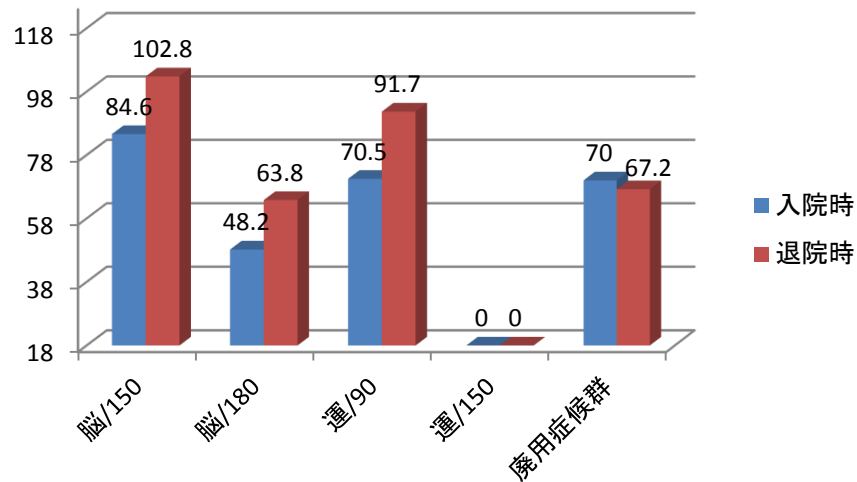
# 退院先n265



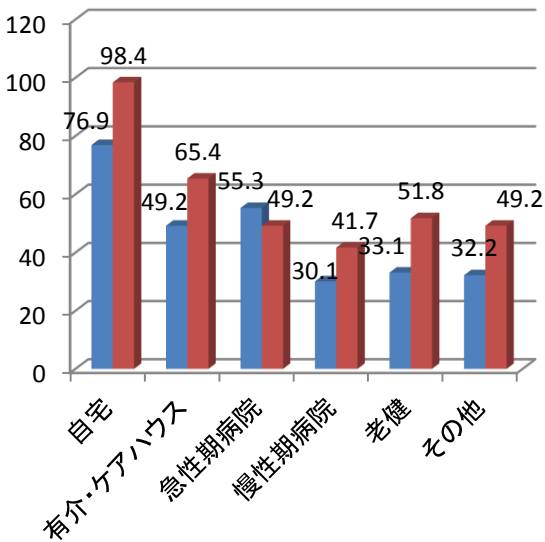
退院先別FIMの変化 n252(回復期対象患者)



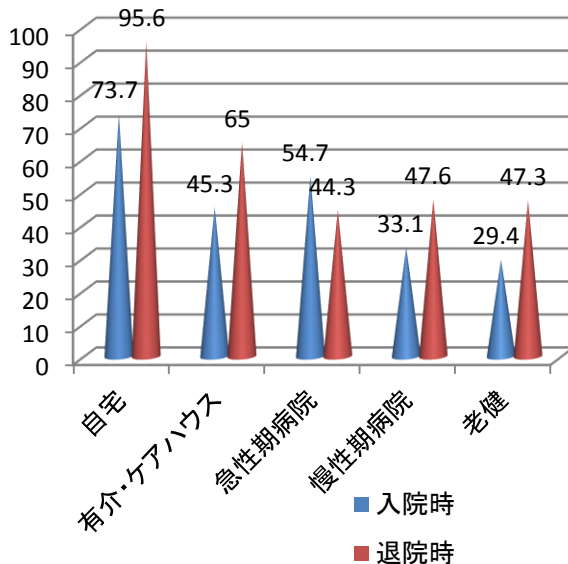
# 入院時・退院時のFIMの変化 n252(回復期対象患者)



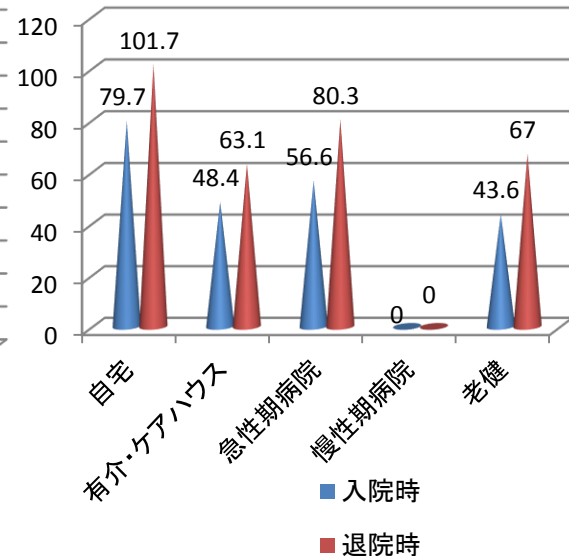
# 退院先別FIMの変化 n265



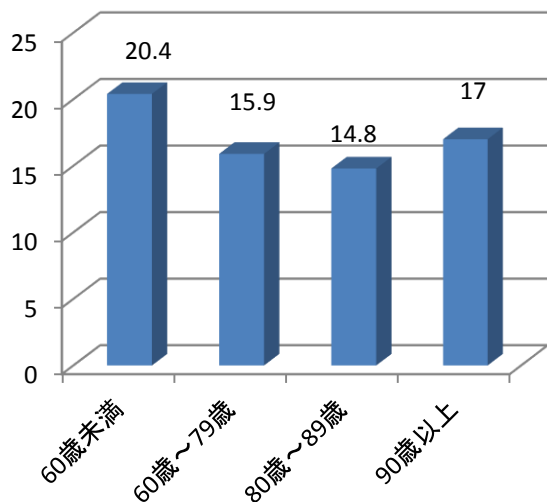
# 脳疾患における退院先別FIMの変化n123



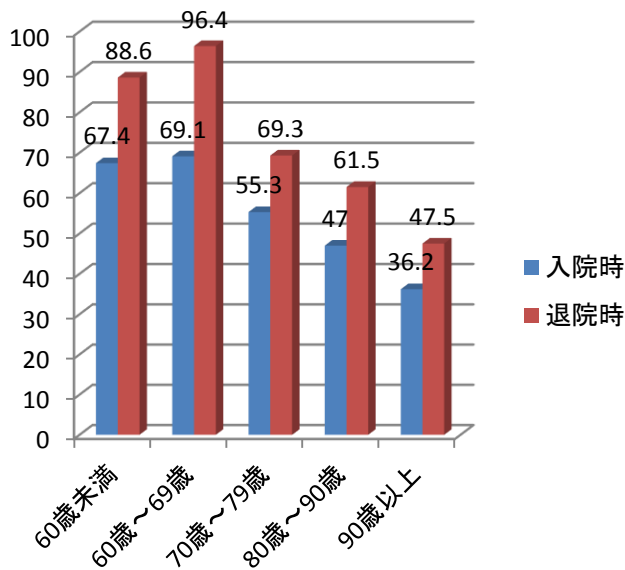
# 運動器における退院先別FIMの変化n101



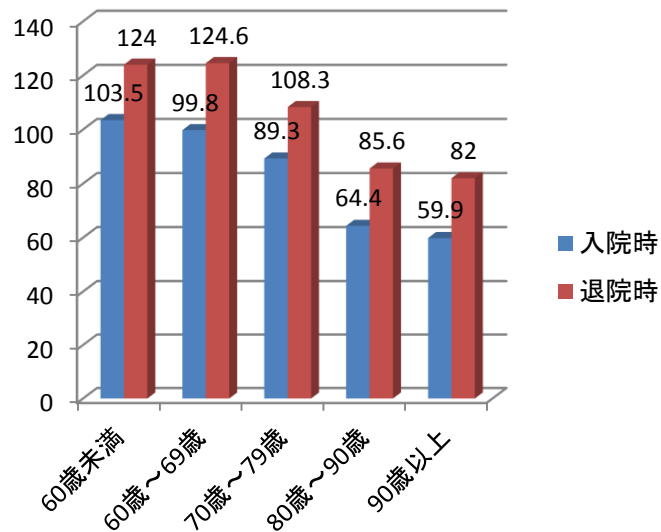
### 年齢とFIMの改善効果



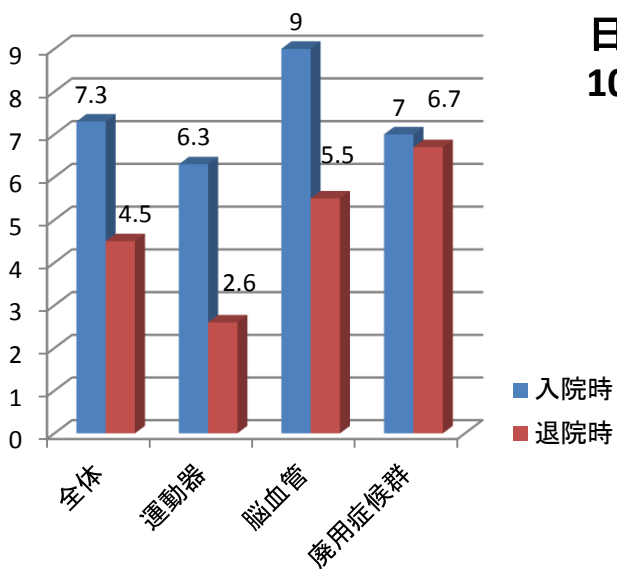
### 入院時FIM別の改善効果 :脳血管



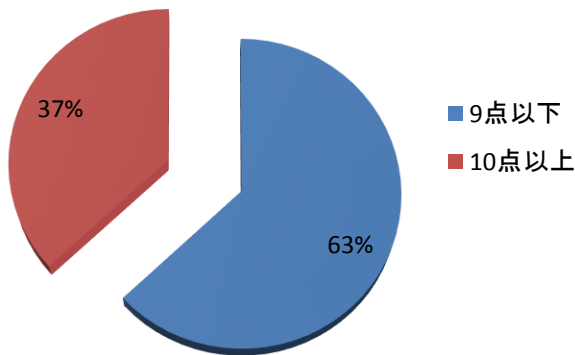
### 入院時FIM別の改善効果 :運動器



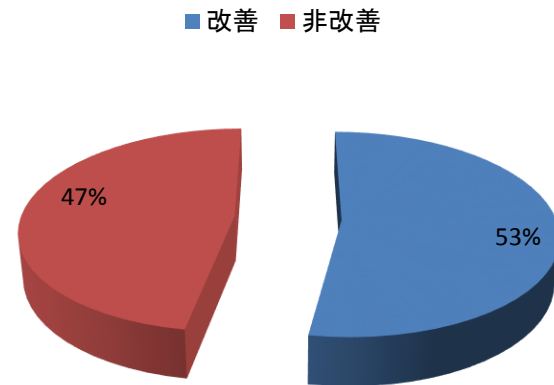
### 疾患別日常生活動作



### 日常生活機能評価重傷者割合 10点以上(重傷者)



### 重症改善率4点 n93



# 日常生活の変化 入院時/退院時

人数

